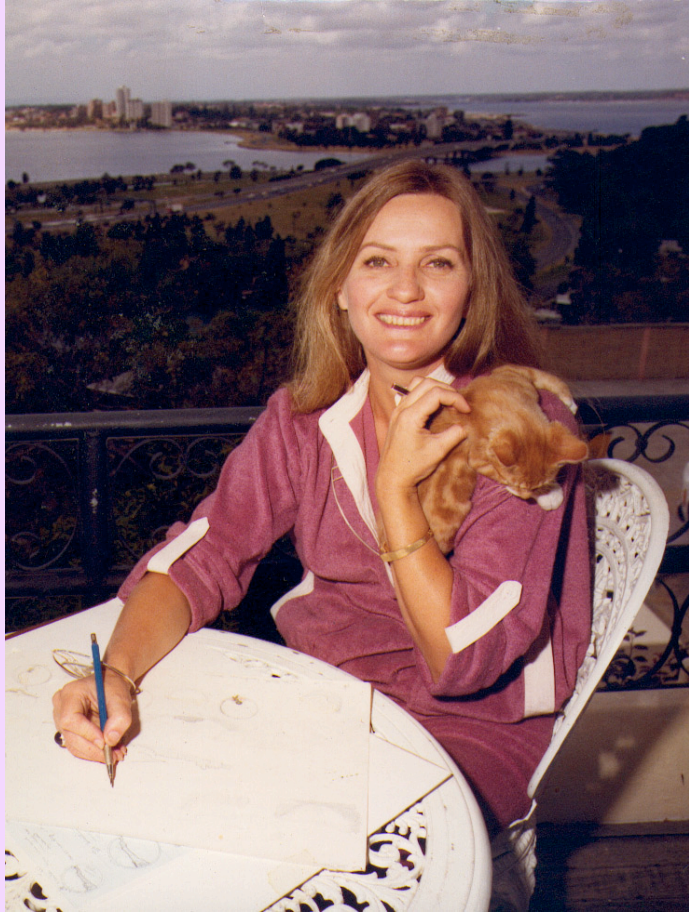


# *Dorothy Erickson's Australian Littoral*



*Jewellery inspired by the sparkling waters and  
colourful creatures of the Western Australian  
coast.*



*Dorothy Erickson was born in Western Australia where she trained first as a teacher and then in both Art and Design. She also holds a Doctorate of Philosophy in Fine Art from the University of Western Australia.*

*Since 1972 she has exhibited widely in Australasia, Europe, the Far East and USA.*



Solo exhibition at Maker's Mark Gallery, Melbourne, 1978.



*She has held over thirty-five solo exhibitions and participated in more than 300 group exhibitions.*



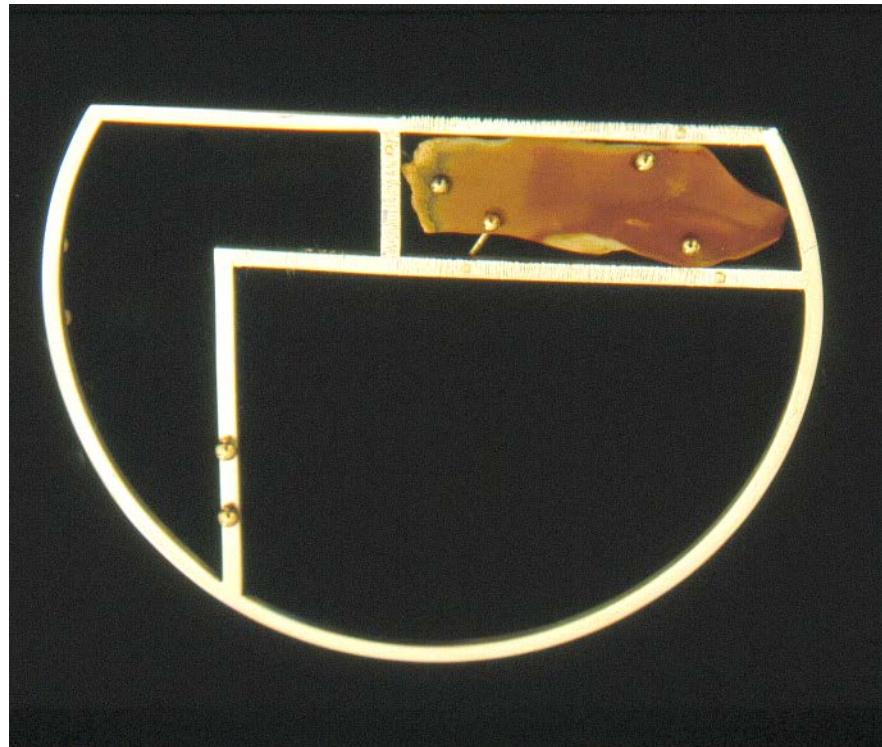
Solo exhibition at Galerie am Graben, Vienna, 1983.

*Her work draws from the colours and light of  
Western Australia.*





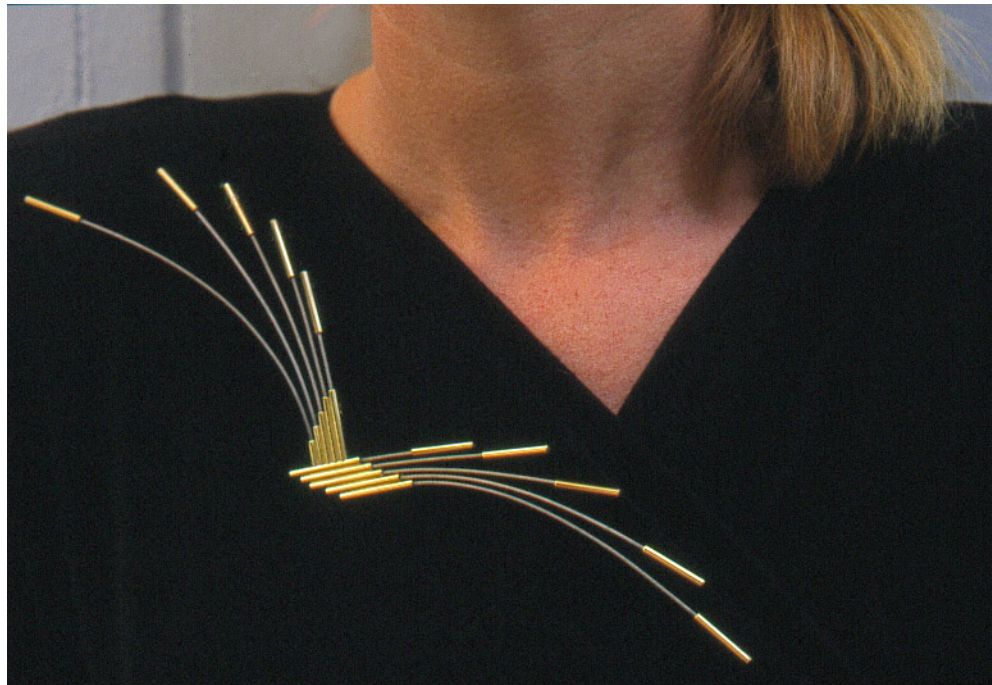
*Dorothy Erickson is represented in numerous public and private collections including the Schmuckmuseum in Pforzheim, Germany which has this Sunset bracelet.*



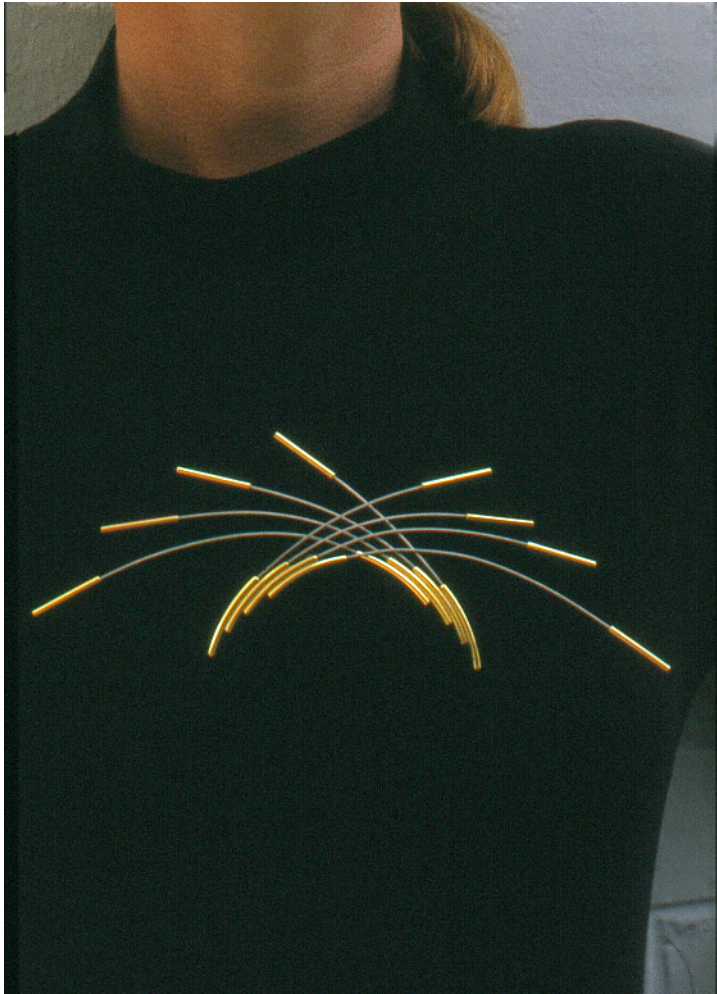
*Sunset bracelet 1982: sterling silver, 18ct gold, mookaite.*

## *The Birds*

*The inspiration for this piece, in 18ct gold and steel cable, is drawn from the display of a Bird of Paradise.*



*Golden Bird of Paradise, private collection, Adelaide.*

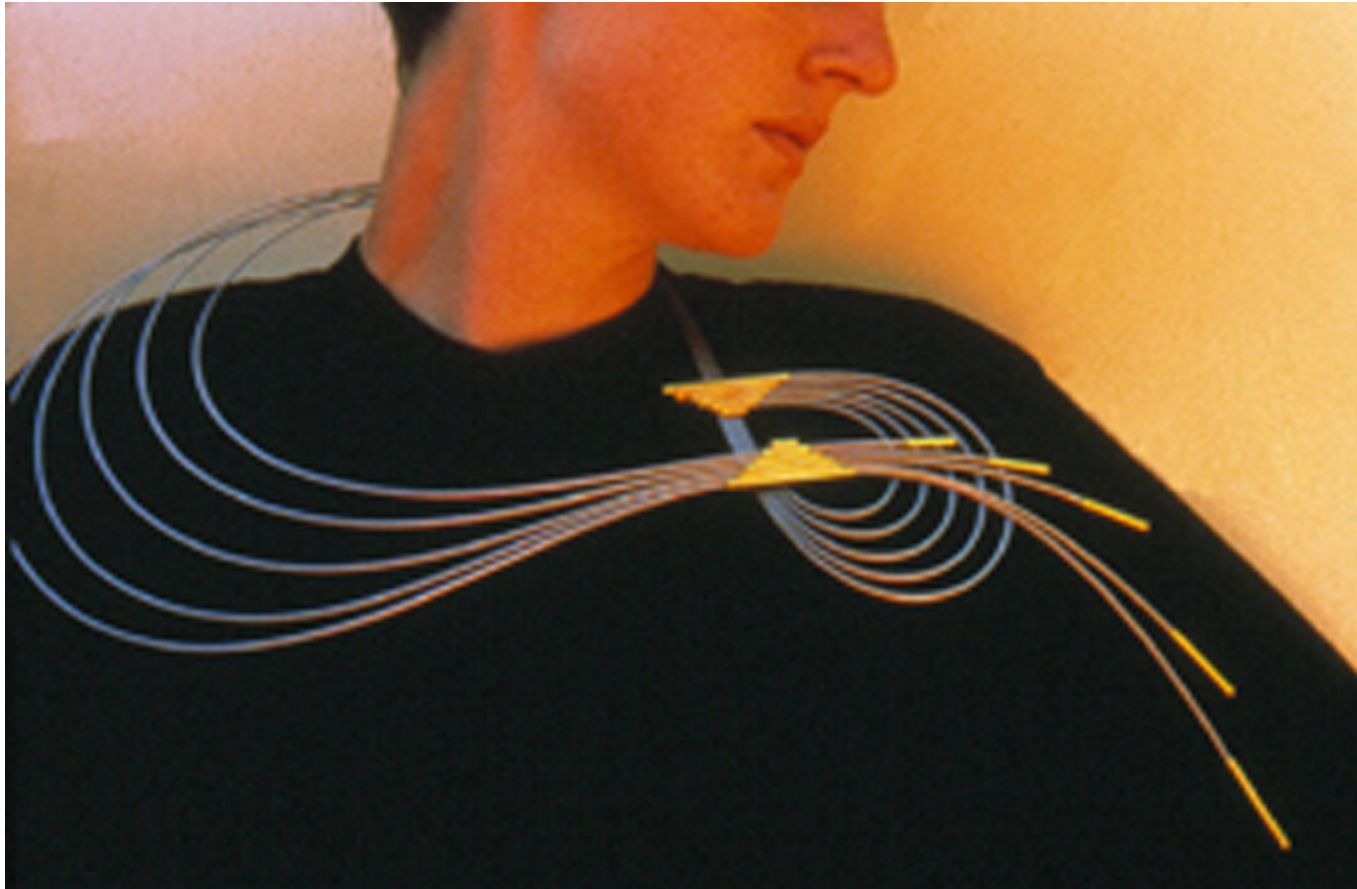


*Dancing Brolgas on  
the plains near  
Broome were the  
inspiration for this  
brooch pair which can  
be arranged in many  
formats to dance on  
the body.*

*Golden Brolgas, 1992, 18ct gold, steel cable.*



*Erickson received an Australia Council grant in 1999 to investigate creating kinetic effects in jewellery. The results are exhibited in Australian Littoral.*

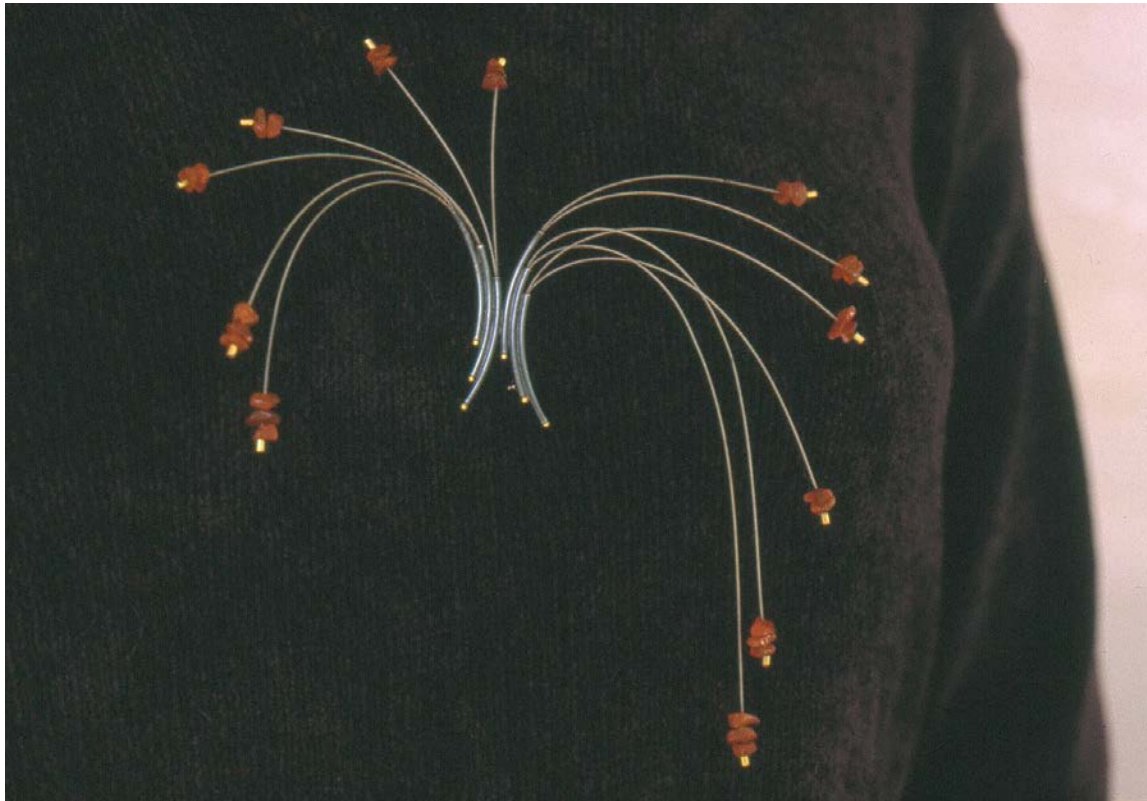


*The Peacock:*  
bodypiece, stainless steel  
and gold-plated silver,  
1999. Collection of  
Wendy Ramshaw MBE,  
London.

*Australian Littoral is made up of three sections - Air, Water, and Earth.*

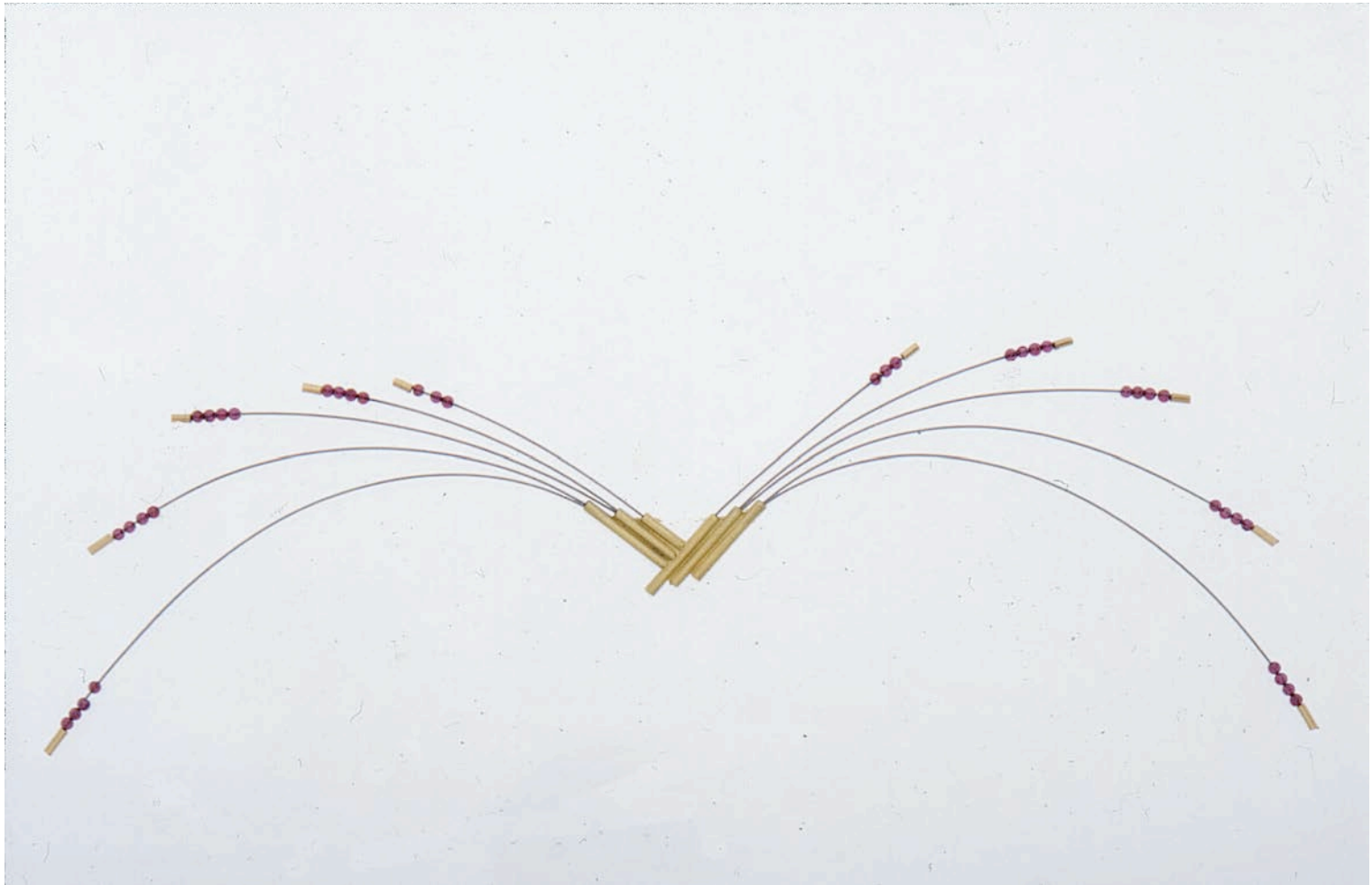
*Air is represented by The Birds,  
water by ... from the Seashore and  
earth by the sparking stones created by  
the fires of the earth's core.*

*Work from these series has been exhibited in Australia, Japan, Europe, UK and Malta.*

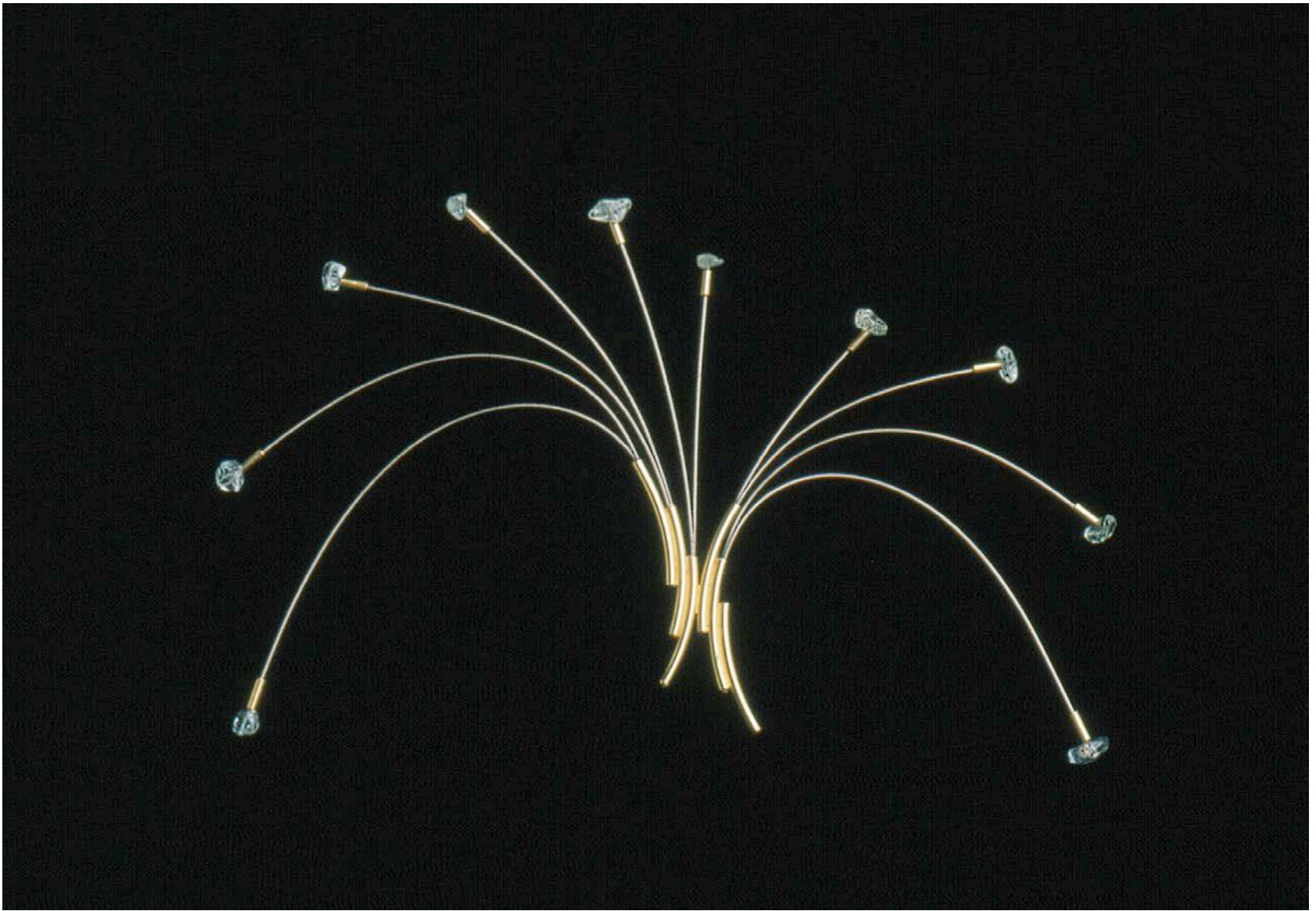


*Cerianthus pectoral, 1999, silver, 18ct gold, steel cable, carnelian. Private collection London.*

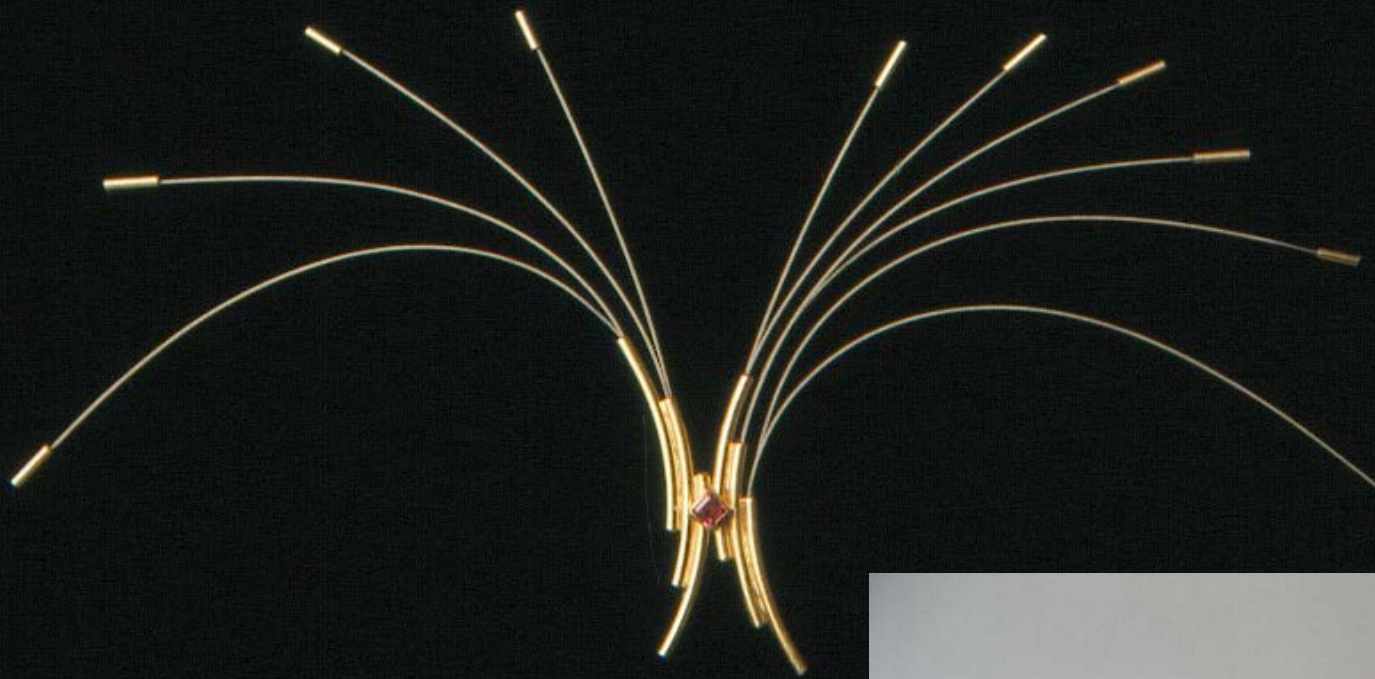




*Dainty Bird of Paradise made with 18ct gold and rhodalite beads on steel cable mimics the action of a displaying Bird of Paradise.*



*Flight over Sparkling Waters uses aquamarines, steel cable and gold tube to create movement when the piece is worn.*



*Sunset Flight*



*Autumn Flight*





*Flight over Sparkling Waters*



*Galah Earrings*



*Pool Brooch*



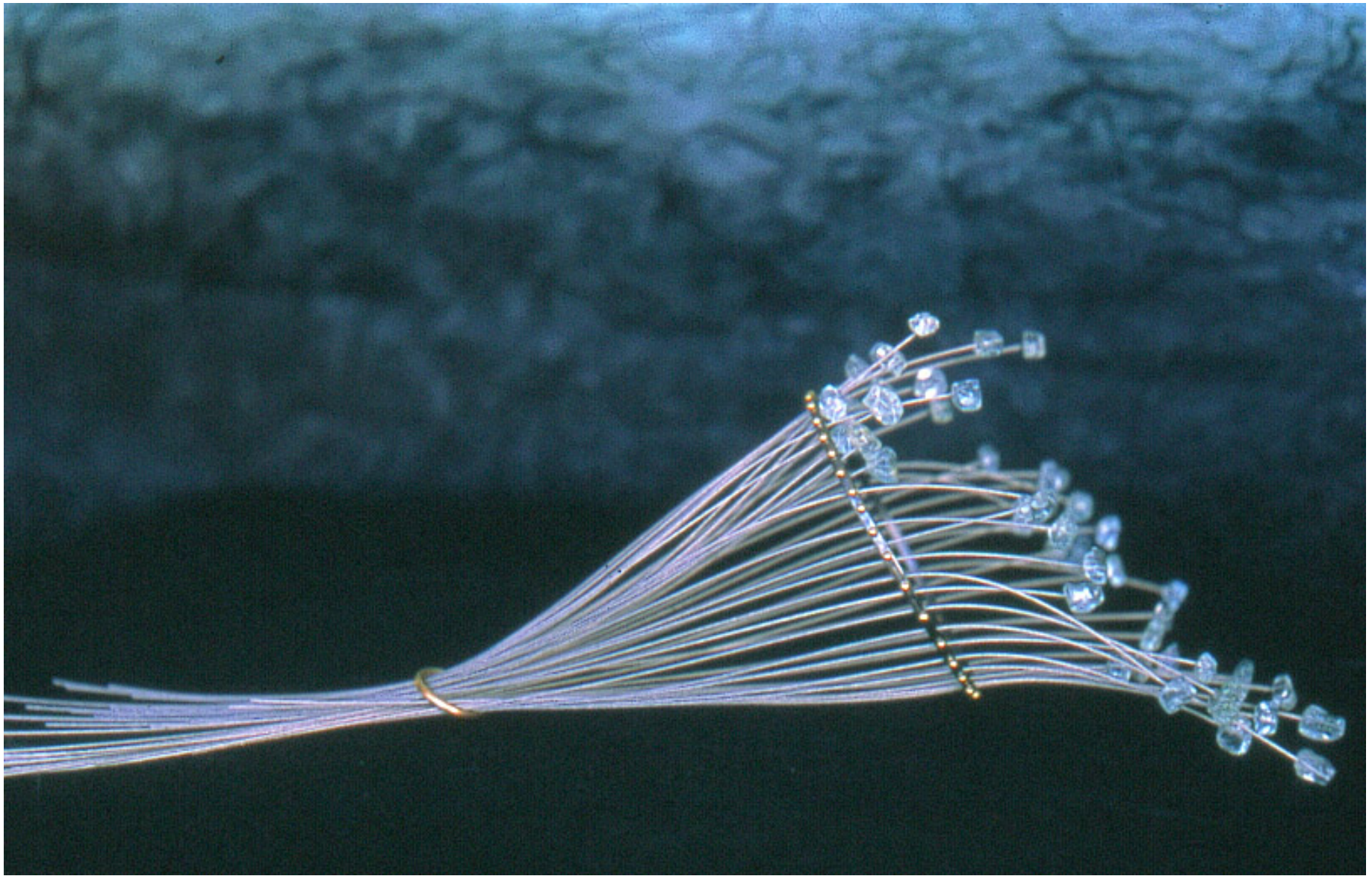
*Bird of Paradise Hairpins*

*Life in the sparkling waters around Australian coasts  
was the source for  
... from the Seashore.*

*The swaying tendrils of sea anemones, light glinting  
on waves, the darting of fish and the swirls of currents  
were a few of the triggers which led to this collection.*







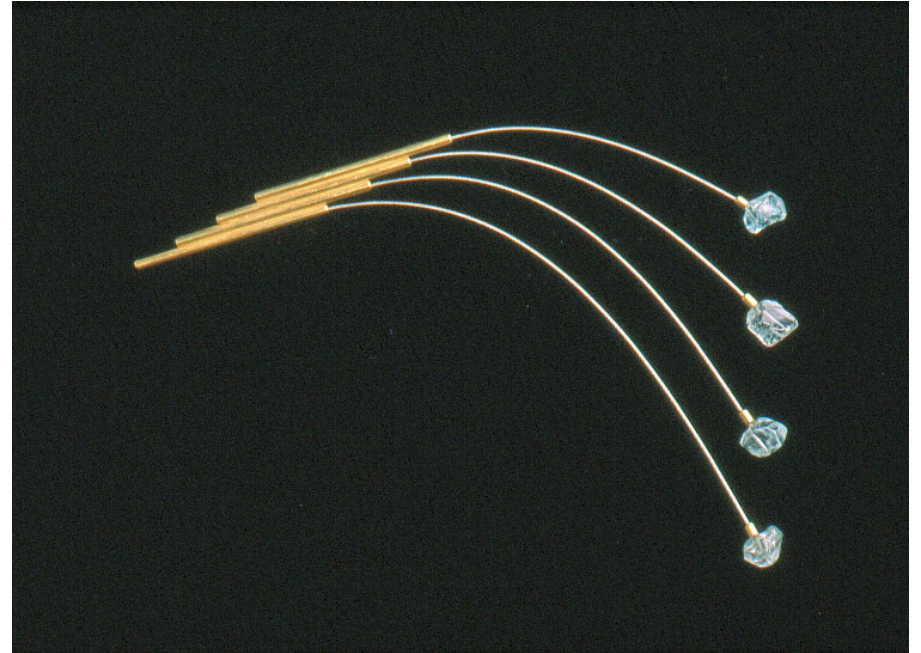
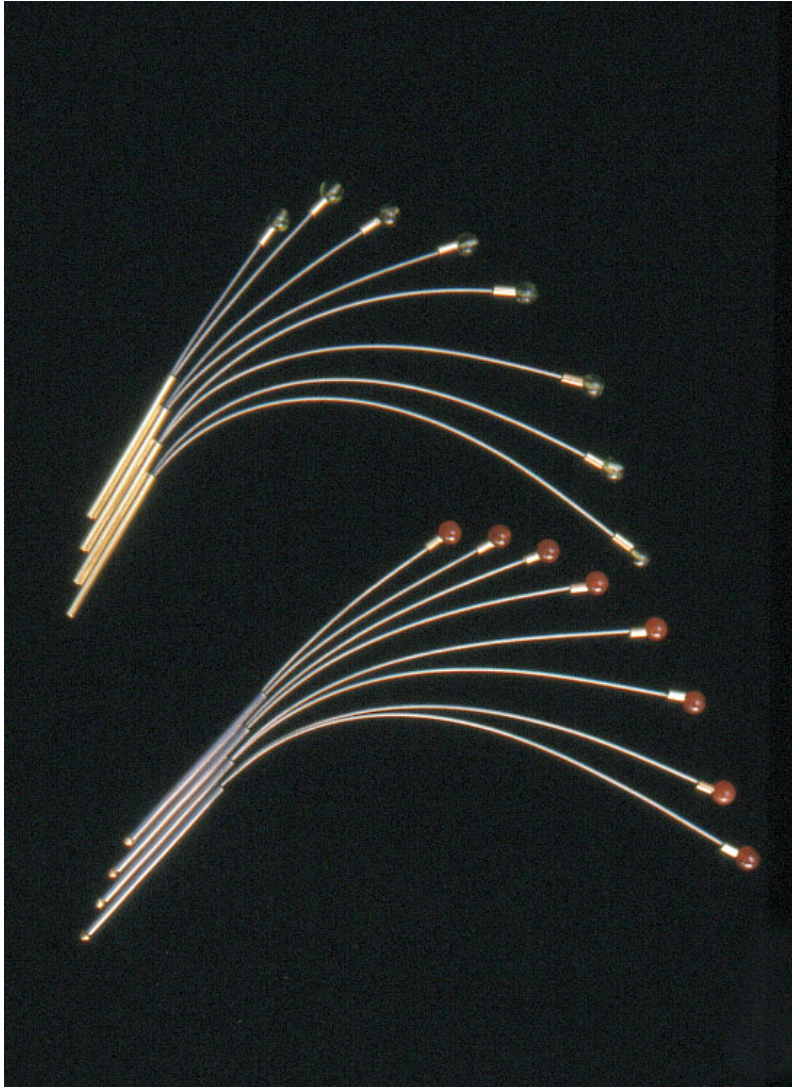
*Ocean Currents*: Table piece: 1997, steel cable, sterling silver, 18ct gold, aquamarines.



*Pieces attempt to capture the underwater world of the Australian coastline with anemones, and cerianthus and other marine life flowing with, or buffeted by, the ocean currents and the water spilling over reefs creating temporary waterfalls.*



*Spirula* pin in 18ct gold, steel and pearls, 2000.  
Private collection.



*Waterfall* brooch: 18ct gold steel cable and aquamarine, 2000.

Two *Waterfall* brooches, sterling silver, 18ct gold, steel cable, carnelian and peridot, 2000.



*Sea Urchin: 2001, stainless steel, 18ct gold,  
sterling silver, citrine, carnelian and rhodalite.*



Collection of the National Museum of Fine Arts, Malta



*The glorious colours of the reef life are reflected in the choice of stones, aquamarine or topaz for the water and carnelian, tourmaline, peridot, amethyst, garnet and citrine for the sea life.*



*Bêche de Mer* bracelet, sterling silver, 18ct gold, steel and tourmaline, 2000. Private collection.

*The series introduces tremblant motion to evoke the movement of underwater life.*



Two *Sea Anemone* rings in 18ct gold, aquamarine and tourmaline, 2000.

*Trembler ring sets can be worn as a group for a grand occasion or in smaller groupings for other times.*



*Trembler I & II ring-sets, 18ct gold, steel and semi-precious stones, 2001.*





*Bêche de Mer  
neckpiece in  
Milanese  
stainless steel,  
18ct gold,  
amethyst and  
fluorite was  
exhibited in  
Australian  
Littoral in  
Vienna in  
2001.*



*The Diplex Querca  
neckpiece in 18ct  
gold, steel and  
aquamarine was  
exhibited at  
Maker's Mark  
Gallery in  
Melbourne in  
2000.*





*This Diplex Querca piece of 2000 can be worn as a brooch or a pendant. It is fabricated from 18ct gold with blue topaz beads on fine steel wire provoking a trembling motion when worn.*





*Cardium  
Cardissa, 2001,  
in 18ct gold  
with amethyst  
and diamond  
is held in a  
private  
collection.*



*Amethyst Display of  
2001 is made from  
18ct gold set with  
an emerald cut  
amethyst on a strand  
of amethyst beads.  
Private Collection  
Malta.*



*Aquamarine Nautilus was exhibited in  
Women At Work at Katherine Kalaf Gallery,  
Cottesloe Western Australia in 2004.*





*Ruby Nautilus, 2002, can be worn as a brooch or as a pendant on a steel and 18ct gold neck ring.*



*Lapis Nautilus,  
of 2004 was  
exhibited in the  
new Katherine  
Kalaf Gallery in  
Perth.*





*The Earth pieces are ongoing. Sapphire Square III was created in late 2004. Multi-hued sapphires are set in an 18ct gold brooch which can also be worn as a pendant.*





*Aquamarine Trembler Choker*

*Scallop Shells Necklace*





*Spirula Pendant*

*Barque Pendant*





*Chandelier Earrings*



*Seashore Necklace*





1441



1432



1446



1448



*Studio in 2005*





*Australian Littoral* was made with a “New Work” grant from the Australia Council for the Arts.



The monograph *Dorothy Erickson: Australian Littoral* was funded by the Western Australian Government through ArtsWA.



Dr Dorothy Erickson was invited to exhibit in Malta by the Maltese - Australian Chamber of Commerce and Culture.



ArtsWA sponsored her flight to Malta to support the exhibition.